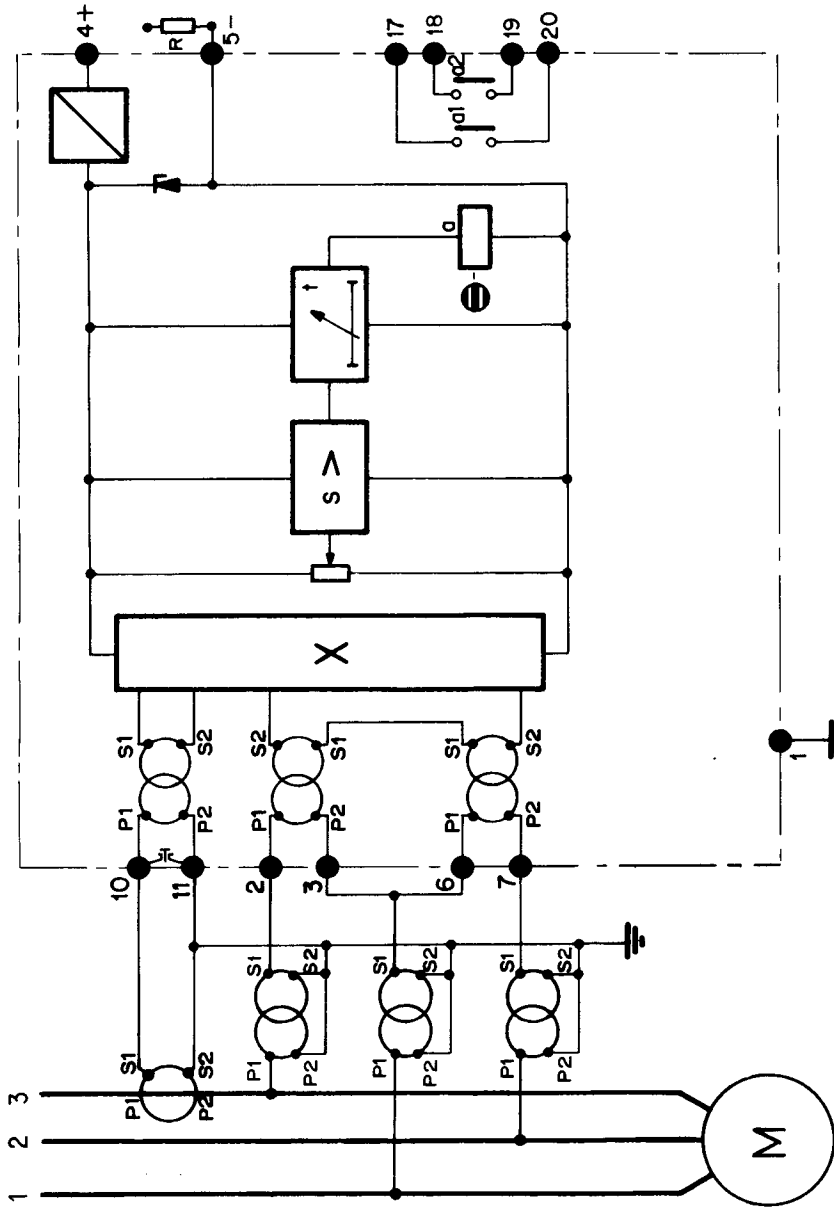


GTM7111



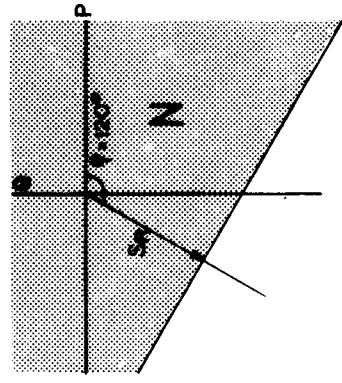
TENSION / AUXILIARY SUPPLY

A		FREQUENCY	
a	50 Hz	b	60 Hz
B		RATED CURRENT	
a	1 A	b	5 A
C		NOMINAL VOLTAGE U_n	
a	100 V	b	110 V
D		OPERATING SETTING	
a	$S = 0,2 - 0,8 \times \sqrt{3} U_n \cdot I_n$		
E		TIME SETTING RANGE	
a	0,1 - 0,5 s		

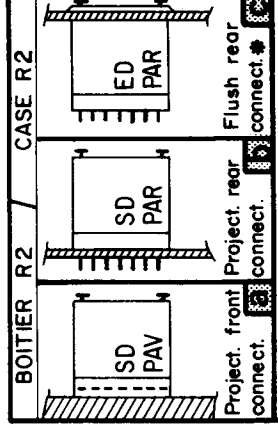
F		AUXILIARY SUPPLY	
a	4.8V	-20+10%	
b	110V	-20+10%	
c	125V	-20+10%	
d	220V	-20+10%(+R)*	
e	100V	-20+10%	
f	110V	-20+10%	
g	127V	-20+10%	
h	220V	-20+10%(+R)*	

NOTA : Les 3 T.P phase-terre peuvent être remplacés par 2 T.P raccordés entre phases.

R = résistance extérieure fournie par nos soins (plan n° 8609)
R = external resistor of our supply (drawing n° 8609)



CONTACTS (zone N)	
GTM7111A	GTM7111B
a1	o1
a2	o2



A.9774

A 2111.79 L'ESSINE / VERIFIE APPROUVE
H.D. APPROUVE

CE Compagnie Continentale d'Equipements Electriques
PARIS - FRANCE